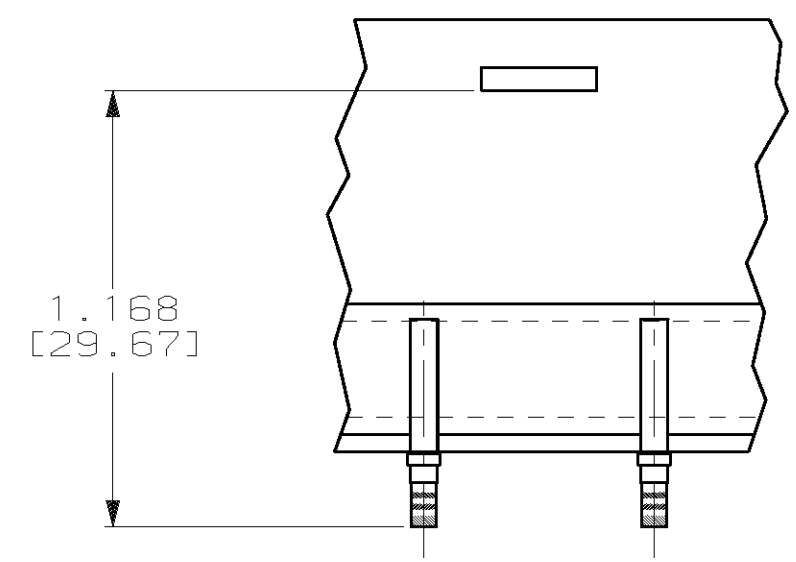


COLOR BANDS
FOR 1218372-1 & -2 ONLY



TAPE MOUNTED
PART NO 1218372-2 ONLY
SCALE 2:1

- 1 FINISH: GOLD PLATED PER MIL-G-45204, TYPE II, OVER NICKEL PER Q0-N-290.
- 2 FINISH: GOLD PLATED PER MIL-G-45204, TYPE II, OVER COPPER PER MIL-C-14550, CLASS 4.
- 3 POINT OF PLATING THICKNESS MEASUREMENT.
- 4. ALL DIAMETERS $\pm .004 Z$ UNLESS OTHERWISE SPECIFIED.
- 5. THIS PART COMPLIES WITH MIL-C-39029/63 AND M24308/10-1.
- 6. ALL SURFACES HAVE A $63\sqrt{}$ OR BETTER FINISH, UNLESS OTHERWISE SPECIFIED.

WITHOUT COLOR CODE	2	1218372-3
CONTACTS ON TAPE	1	1218372-2
AS SHOWN	1	1218372-1
REMARKS	FINISH	PART NUMBER

THIS DRAWING IS A CONTROLLED DOCUMENT.

DW	C. C. THOMAS	1-25-99
CHK	R. GROSS	2-22-99
APP'D	R. GROSS	2-22-99

AMP Incorporated
Harrisburg, PA 17105-3608

PRODUCT SPEC: #20 SOCKET CONTACT, CRIMP, AMPLIMITE

APPLICATION SPEC: -

SIZE: A1 CAGE CODE: 00779 DRAWING NO: 1218372

REMARKS: CUSTOMER DRAWING

SCALE: 20:1 SHEET: 1 OF 1 REV: 0